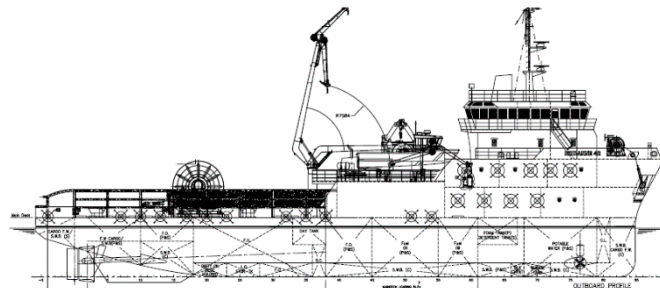


M/V BRAVO TOPAZ



MAIN PARTICULARS:

LOA:	58.00	meter	
Breadth:	13.80	meter	
Draft Loaded:	4.50	meter	
GT:	1452	ton	(Suez: 1669 ton)
NT:	435	ton	
DWT:	1353	ton	
Safe Manning:	6	crew	
Air Draft:	24	meter	

FLAG & CLASS:

Flag:	Gibraltar	
Port of Reg.:	Gibraltar	
Class:	RINA ICE	(IACS Class)
IMO no.:	9421556	
Call Sign:	ZDKA9	
RINA no.:	92752	
Year Built:	2010	
Place Built:	Malaysia, Converted in Portugal 2011	

PROPULSION MACHINERY:

Main Engines:	2 x 1491 kW	Cummins (QSH60M)
Steering Gear:	2 x Independent	Berg Propulsion
Propellers:	CPP 4 Blades	Berg Propulsion
Rudders:	2 x Independent	Berg Propulsion

SPEED & CONSUMPTION:

Max. Speed:	12,2 knots @ 12 tons/day (1800 rpm)
Eco Speed:	9,7 knots @ 8,5 tons/day (variable rpm)*
Eco Speed:	7 knots @ 4,5 tons/day (variable rpm)*
Service Speed:	5 knots @ 3 tons/day (variable rpm)*

* on variable rpm keep one auxiliary engine running

DECK MACHINERY:

Deck Crane:	5 ton @ 6 meter	ZM
	2 ton @ 15 meter	ZM
Work Boat Davit	12 ton	Vest Davit
Streamer Winch:	9000 m / 63 mm	Parkburn
Fuel Winch:	<i>prepared for effortless installation</i>	
Towing Hook:	50 ton	Strainstall
Towing Winch:	N/A	
Capstans Aft:	2 x 5 ton x 10 meter/min	
Anchor Winch:	34mm / electric windlass	
Mooring Winch:	5 ton x 5 meter/min	

AUXILIARY MACHINERY:

Aux. Eng.:	2 x 250 kW	Cummins
Aux. Eng.:	1 x 456 kW	Scania
Shaft Generator:	1 x 800 kW	Stamford
Bow Thruster:	1 x 600 kW / 8 ton	Schottel

ELECTRIC POWER:

220 V / 400 V – 50 Hz

CAPACITIES:

MGO:	1040	m3	
FW:	500	m3	(114 m3 potable)
Ballast:	206	m3	
FIFi:	1200	m3/hr	(foam/detergent 15 m3)
FO Cargo Pump:	150	m3/hr @ 40 meter	
FW Cargo Pump:	100	m3/hr @ 60 meter	
Drill Water Pump:	N/A		
Deck Cargo:	5 ton/m2 (2 ton/m2)		
Cargo Deck Area:	256	m2	(open deck, inside & top of hangar)
FW Maker	3	ton/day	
SSV:	2 x TEU and 4 x Yokohama Fenders		

NAVIGATION & COMMUNICATION:

SSB:	Furuno FS 2571 C
VHF:	2 x Furuno 8800S / 1 x 3000 / 2 x JMC
VHF Portable:	3 x Entel HT 644 / 3 x Icom GMDSS
UHF:	3 x Entel HT 783
Radar:	Furuno Far 2137S (ARPA) / 2117 X (ARPA)
Gyro:	Tokimec TG 8000
GPS:	Furuno GP-150 / GP-32
AIS:	Furuno FA-150
Satellite Compass:	Furuno SC-502
NAVTEX:	JMC NT 1800
EPIRB:	Tron 40 S MK II
SART:	Seven Star S 701
El. Charts:	Telechart T2027 / C-Map
Autopilot:	Simrad AP-50 (with remote control)
Sat C no. 1:	Furuno Felcom 15 / INM 423658510
Sat C no. 2:	N/A
Echo Sounder:	Furuno FE 700
Speed Log:	Furuno DS-80
LRIT:	<i>connected to SAT C</i>
BNWAS:	A006.51
SAT-C E-mail:	Inmarsat 4236585510@inmc.eik.com
Internet / E-mail:	Marlink topaz.captain@opstad.biz
Phone:	Marlink +47 23 67 96 08 / +47 23 67 96 09
Iridium:	

ACCOMMODATION:

Cabins:	1, 2 and 4 men
Bunks:	40 total
Passenger:	50 pax for 16 hr. / 36 pax for 60 hr.

LIFE SAVING:

MOB:	1 x 6 men	(single arm davit)
Life Rafts:	6 x 25 men	(Viking)
Immersion Suits:	56	

M/V BRAVO TOPAZ



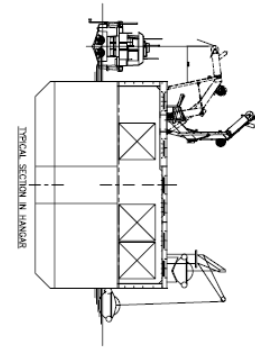
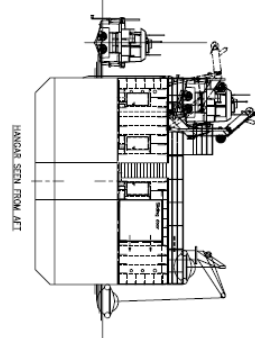
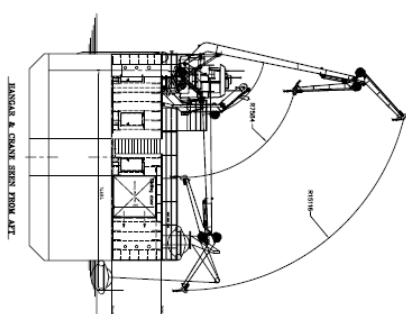
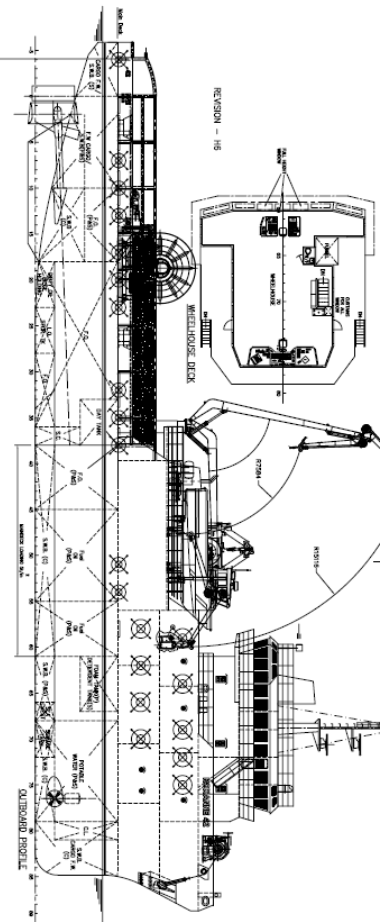
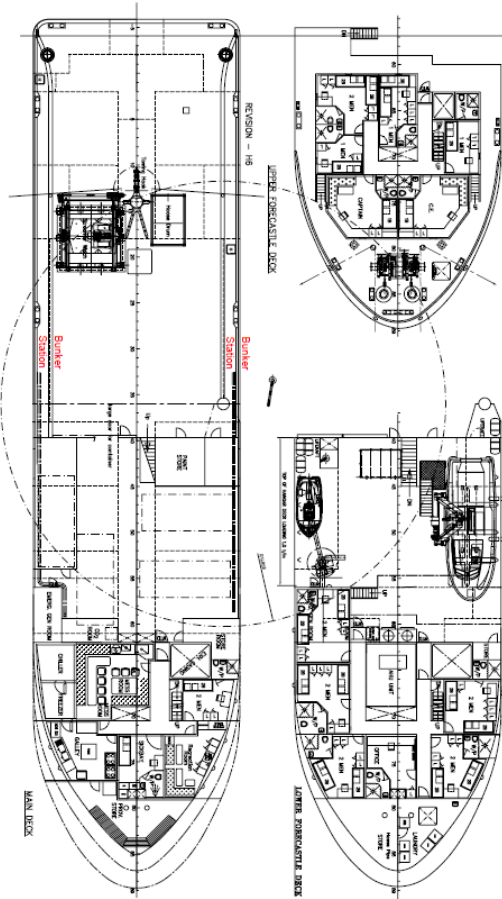
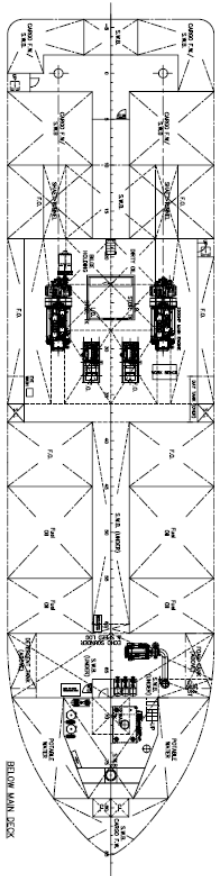
OWNER:

Opstad Offshore AS (IMO reg. no.: 5316808)
 Hamnegata 8, 6413 Molde, NORWAY
 Tel.: +47 922 52 783 / +47 712 45 200
 E-mail: knut@opstad.biz / livi@opstad.biz
 Web: www.opstad.biz

MANAGEMENT:

Opstad Shipping AS (IMO reg. no.:5097644)
 Hamnegata 8, 6413 Molde, NORWAY
 Tel.: +47 922 52 783 / +47 712 45 200
 E-mail: knut@opstad.biz / livi@opstad.biz
 Web: www.opstad.biz

A B C D E F G H I J K L M N O P Q R S T U V W X Y Z



PRINCIPAL PARTICULARS

LENGTH O.A.	84.00m
LENGTH B.P.	82.00m
BEAM M.D.	13.80m
DEPTH M.D.	5.50m
DRIFT DESIGNED	4.50m
ACCOMMODATION	36 MEN

	NEW HANGAR 2010	1:100	DATE	2010
	M/V BRAVO TOPAZ	1:100	NO.	1
Maritime Engineering AS 10067-003				

100	100
101	101
102	102
103	103
104	104
105	105
106	106
107	107
108	108
109	109
110	110
111	111
112	112
113	113
114	114
115	115
116	116
117	117
118	118
119	119
120	120

M/V BRAVO TOPAZ

